

Xpredict SYSTEMS**PF150****PERISTALTIC PUMPS**
MEASURE EACH DROP

- Precise 150ml Flow Rate
- Fire resistant material
- Sleek Design
- Low Cost
- Quiet Operation
- 6 Months Warranty

**WE ARE**
INTRODUCING
PERIFLOW
150**QUICK DETAILS**

- Brand Name: Xpredict Systems
- Model Number: PF150
- Place of Origin: Bangalore, India
- Application: Drinking water treatment, Food and Beverage Industry, Irrigation and Agriculture, Washing and Cleaning, Water Distribution, Water Treatment Solutions, Metering
- Power: 3 / 1.5 Watts
- Power Source: Electric DC
- Pressure: 20psi
- Structure: Double Cover Direct Drive
- Cable Length: None
- Outlet Size: 5mm
- Voltage: 3V / 6V
- Usage: Suitable for Viscosities of Water, Soap, Gel
- Theory: Peristaltic Pump

	Watts	Amps	Voltage
Power	1.5	0.25	6
Walk over	No		
Weight in gms	54.52		
Overall Length in mm	55.7		
Diameter in mm	37		
Flow rate ml/min	150		



Additional Features

- Exchangeable Pump Head in multiple color
- Option for preassembled food grade PP made barbed fitting for 5mm(ID) external tube
- Make in India DC motor with quality assurance
- Standard Chemical resistant silicon tubing



xpredictlabs



xpredictlabs

SUPPLY ABILITY : 5000 Units per Month Lead time will be confirmed once the order is received*

PF450

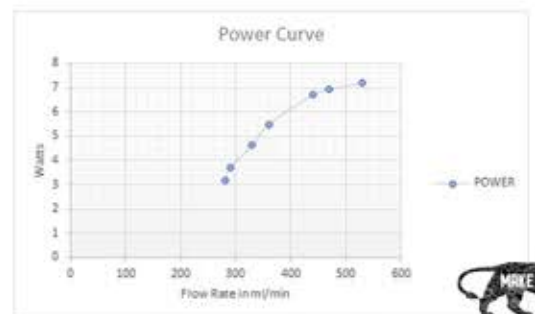
PERISTALTIC PUMPS
 MEASURE EACH DROP

- **Precise 450ml Flow Rate**
- **Fire resistant material**
- **Sleek Design**
- **Low Cost**
- **Quiet Operation**
- **6 Months Warranty**

WE ARE
 INTRODUCING
PERIFLOW
450

QUICK DETAILS

- Brand Name: Xpredict Systems
- Model Number: PF450
- Place of Origin: Bangalore, India
- Application: Drinking water treatment, Food and Beverage Industry, Irrigation and Agriculture, Washing and Cleaning, Water Distribution, Water Treatment Solutions, Metering
- Power: 12 Watts / 20 Watts
- Power Source: Electric DC
- Pressure: 40psi
- Structure: Double Cover Direct Drive
- Cable Length: None
- Outlet Size: 3mm
- Voltage: 12V / 24V
- Usage: Suitable for Viscosities of Water, Soap, Gel
- Theory: Peristaltic Pump



Additional Features

- Exchangeable Pump Head in multiple color
- Option for preassembled food grade PP made barbed fitting for 5.5mm(ID) external tube
- Made in India DC motor with quality assurance
- Standard Chemical resistant silicon tubing

SUPPLY ABILITY : 5000 Units per Month Lead time will be confirmed once the order is received*



xpredictlabs



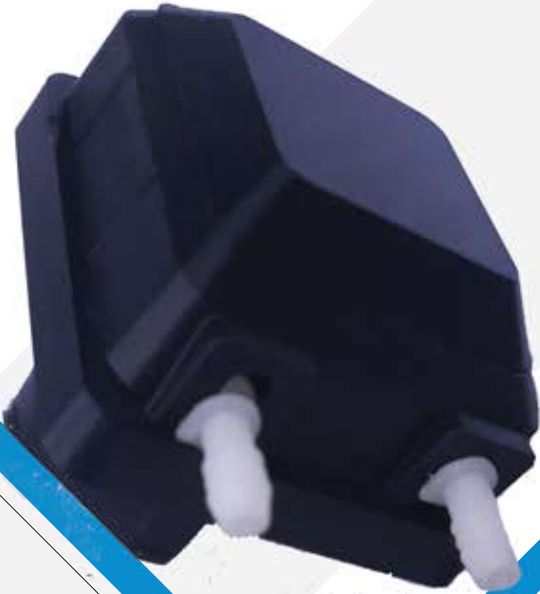
xpredictlabs

Xpredict **SYSTEMS**

PF 800G/S

PERISTALTIC PUMPS

MEASURE EACH DROP



WE ARE

**INTRODUCING
MOST UNIQUE
PERIFLOW 800**

Precise 800ml Flowrate
Fire Resistant Material
Sleek Design
Low Cost
Quiet Operation
6 Moths Warranty

Quick Details

Brand Name: Xpredict Systems

Model Numbe: PF800

Place Of Origin: Bangalore, India

Application: Drinking Water Treatment, Food & Beverage Industry, Irrigation & Agriculture, Washing & Clenaing, Water Distribution, Water Treatment Solutions, Metering

Power: 20 Watt

Power Source: Electric DC

Pressure: 2 Bar

Structure: Gear Drive/Stepper Drive

Outlet Size: 6mm

Voltage: 24V

Usage: Suitable for Viscosities of Water, Gel, Soap

Theory: Peristaltic Pump



Xpredict **SYSTEMS**

AUTO DOZER

DOSING SYSTEM

SET EACH DROP

WE ARE

**INTRODUCING
AUTO DOZER**

Min Flowrate 10 ml to 450 ml
Quite Operation
Make In India Product
Quiet Operation
6 Months Warranty
Low Cost

Quick Details

Brand Name: Xpredict Systems

Model Numbe: XADS450

Place Of Origin: Bangalore, India

Application: Drinking Water Treatment, Food & Beverage Industry, Irrigation & Agriculture, Washing & Clenaing, Water Distribution, Water Treatment Solutions, Metering

Power: 20 Watt

Power Source: Electric DC

Pressure: 2 Bar

Structure: Double Cover Direct Drive

Outlet Size: 3 mm

Voltage: 12/24 V

Usage: Suitable for Viscosities of Water, Gel, Soap

Theory: Peristaltic Pump

